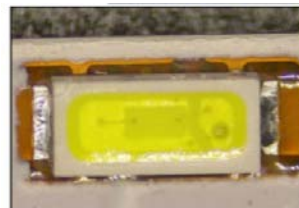


INTRODUCTION

Ring light is a kind of "shadow less lamp" directly mountable on Objective, which is illuminated from a 360-degree annular angle with adjustable brightness. This ring light provides cool, even, intense and focused shadow-free illumination. It is an ideal durable cool light source for microscopes.

TECHNICAL SPECIFICATIONS

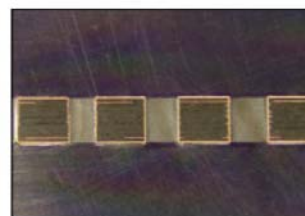
- Ring Inner Dia : 62 mm
- Led Quantity : 16 Nos.
- Power Supply AC 220-240V, 50/60hz
- Input Voltage : DC 24V through Adapter
- Brightness Control: 0-100%
- Working Distance : 40-120mm
- Life : 50000 Hours
- Feature : Polarizing Glass With Diffuser (Analyzer and Polarizer, Rotatable 360 degree)



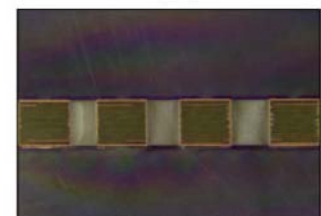
Ring light



Polarized ring light



Ring light



Polarized ring light

APPLICATION

It is very suitable for surface illumination of non-reflective objects, and is often used to observe and detect the edge of the objects, surface structure, traces etc such as components in the Printed Circuit board, liquid crystal glass substrates, metal and non metal surface dust, scratch damage, various kind of particles etc and is also the most common way of illumination for stereo microscopes.